

Henry Street, Apsley, Hemel Hempstead, HP3 9DU

Price £385,000

Situated in highly sought after Apsley is this spacious and well presented character terraced home. Boasting two bedrooms which benefit from being over the side access alleyway meaning larger bedroom, 11'9 lounge, 12'5 dining room, fitted kitchen, double glazing, gas central heating, modern bathroom suite and rear garden.

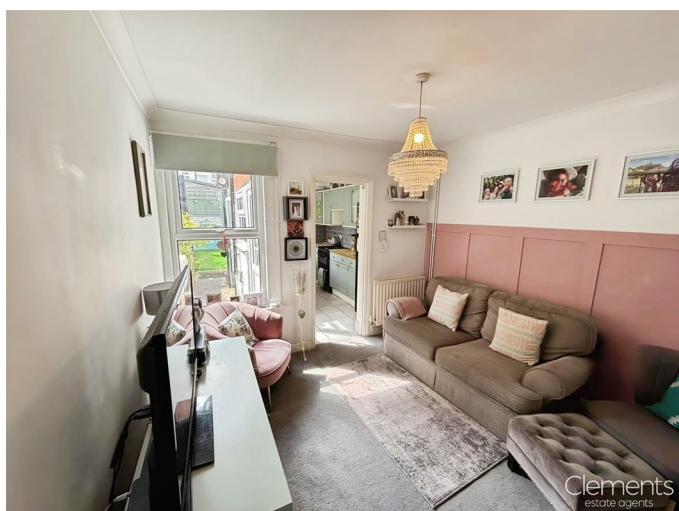
Located within easy reach of the local shops, restaurants, Hemel Hempstead town centre, Apsley and Hemel Hempstead train stations and the M1, M25 and A41 road links.

Dining Room 11'9 into bay x 10'3 (3.58m into bay x 3.12m)



Newly fitted front door, double glazed window, coving, radiator and open fire place currently not being used.

Lounge 12'5 x 10'3 (3.78m x 3.12m)



Double glazed window, radiator, coving and stairs to first floor.

Kitchen 11'3 x 6'6 (3.43m x 1.98m)



Fitted kitchen comprising wall and base units with work surfaces to compliment, butler sink, gas cooker point, radiator, plumbing for washing machine and dishwasher, two double glazed windows and double glazed door to garden.

Landing

Airing cupboard and loft access.

Bedroom One 11'5 x 9'10 (3.48m x 3.00m)



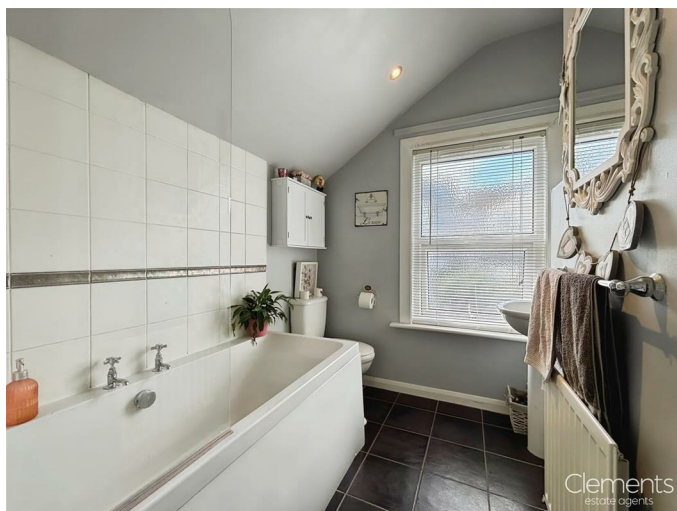
Two double glazed windows, coving, radiator and two built in wardrobes.

Bedroom Two 10'7 x 9'6 (3.23m x 2.90m)



Double glazed window, radiator and built in wardrobe and storage.

Bathroom



Double glazed window, panelled bath with shower over, pedestal wash hand basin, low level wc, radiator, part tiled walls and tiled floor.

Rear Garden

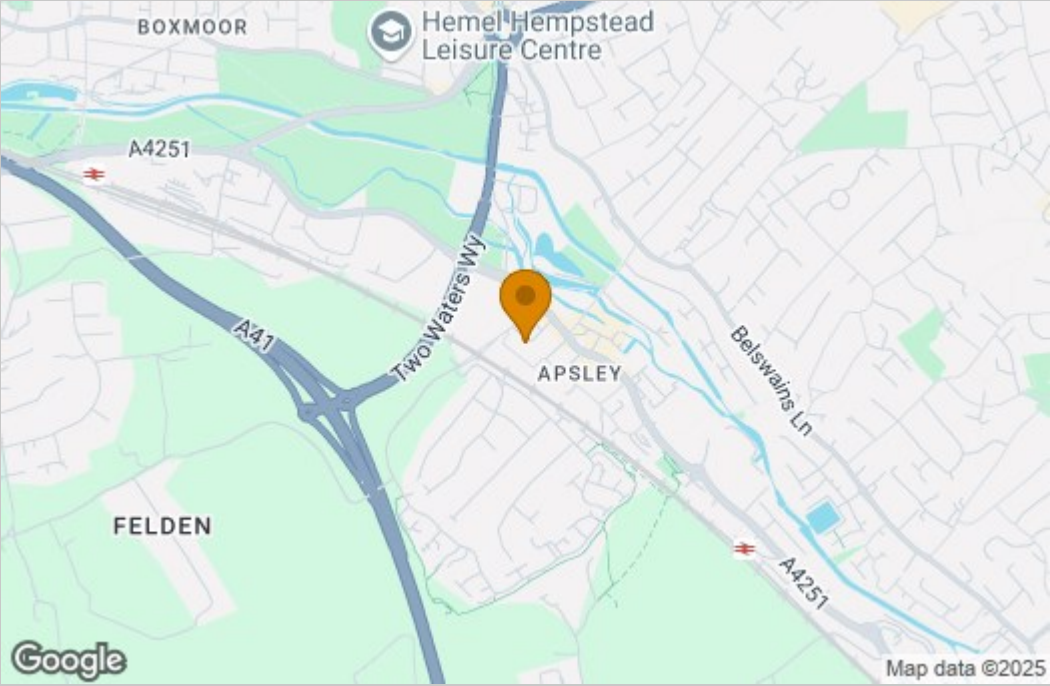


Shed, side access, brick paved and artificial lawn.

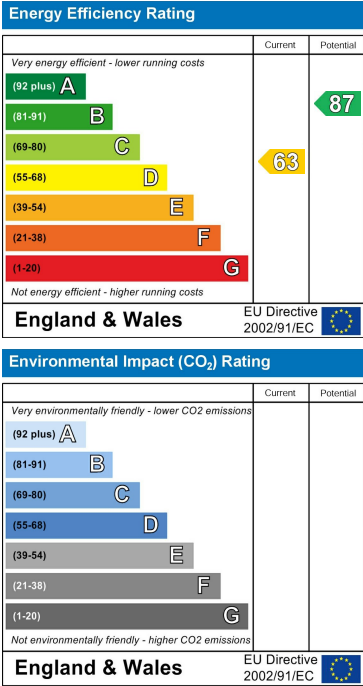
Floor Plan



Area Map



Energy Efficiency Graph



These particulars, whilst believed to be accurate are set out as a general outline only for guidance and do not constitute any part of an offer or contract. Intending purchasers should not rely on them as statements of representation of fact, but must satisfy themselves by inspection or otherwise as to their accuracy. No person in this firms employment has the authority to make or give any representation or warranty in respect of the property.